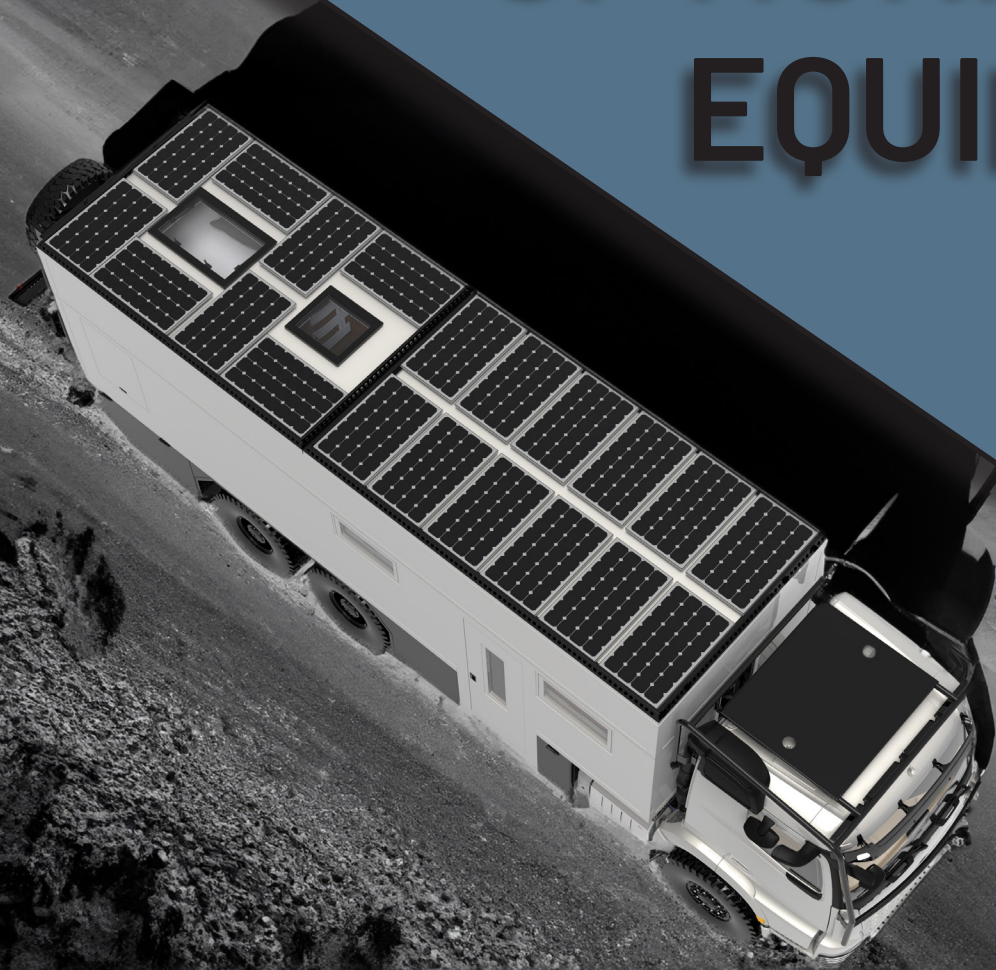


OPTIONAL EQUIPMENT 2024



OPTIONAL EQUIPMENT



Leather upholstery with contrast stitching
(multiple colors available)

SA11000
upholstery



Real wood flooring
(2 decors selectable)

SA12000
Floor

Bronze flooring
(2 patterns selectable)



Granite
Color: Black Nero Impala

SA13000
Countertops
in kitchen and
bathroom

Exposed concrete
Color: Gray-white mottled



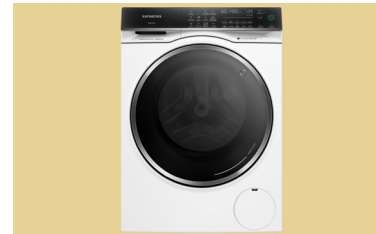
Bora 4-burner induction cooktop with integrated extractor system

SA14100
induction cooktop
with extractor hood



Siemens oven with microwave, controllable via app

SA14200
oven with
microwave



Siemens iQ500 washer-dryer
10/6 kg 1400 rpm
controllable via app

SA14300
washer-dryer



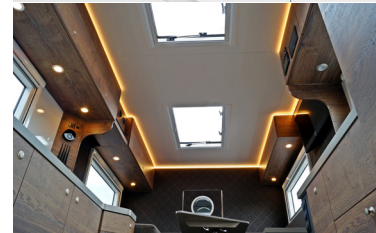
3 kg laundry, washing machine mounted on the cabinet

SA14400
washing machine



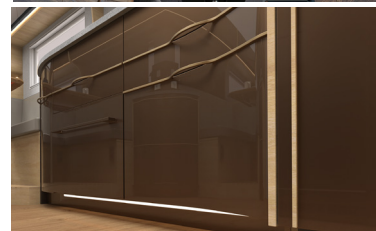
Fisher & Paykel
Integrated drawer dishwasher
Up to 6 place settings

SA14500
dishwasher



Ambient lighting above the cabinets, warm white with COB-LED technology.

SA18000
ambient lighting



Ambient lighting as baseboard lighting, warm white with COB-LED technology.

SA19000
Ambient lighting



Canopy under the ceiling
with ambient lighting
Warm white with COB-LED
technology

SA20000
canopy



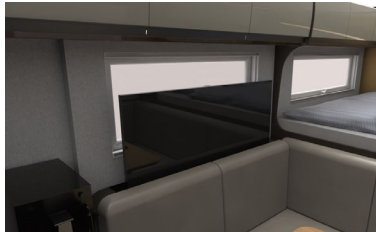
Pull-down bed with over-
head cabinet above the
seating area
1,400 x 2,000mm sleeping
area. Froli mattress
Froli Star Mobil-System
Heating under the mattress

SA21000
electric lifting bed



Samsung Smart TV including lift
system installed in the cabinet

SA22000
TV lift system
cabinet



Samsung Smart-TV inkl. Liftsys-
tem hinter der Rücklehne der
Sitzgruppe

SA23000
TV lift system
seating area



Roof window with electric
opening via switch or remote
control

SA24000
Electric roof window



Cutlery tray in the drawer,
matching our cutlery set

SA25100
Cutlery insert



Dish insert in the drawer,
matching our plate set

SA25200
Dish insert



30-piece cutlery set, 7-piece
pots and pans set, 6-piece
kitchen knife set

SA25300
WMF-Set 1



30-piece plate set from the
Compact series by Seltmann-
Weiden, WMF spice mill set, WMF
glasses for 8 people, WMF mugs
for 6 people, Profi Plus kitchen
utensil set (6 pieces), WMF Gourmet
kitchen bowl set (4 pieces)

SA25400
WMF-Set 2



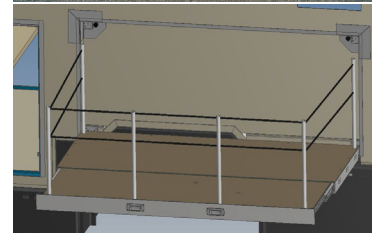
Stainless steel outdoor kitchen
with 2 drawers, stainless steel
sink, household faucet, 2-burner
induction cooktop, and electric
griddle. Countertop and drawer
fronts made of teak wood.

SA28000
Outdoor kitchen,
large in the storage
compartment



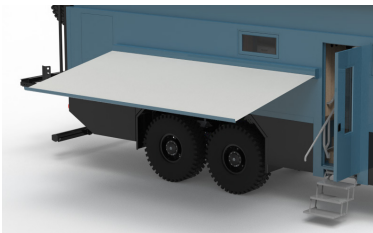
Stainless steel outdoor kitchen
with 1 drawer, stainless steel
sink, household faucet, 2-burner
induction cooktop. Countertop and
drawer fronts made of teak wood.

SA29000
Outdoor kitchen,
small in the storage
compartment



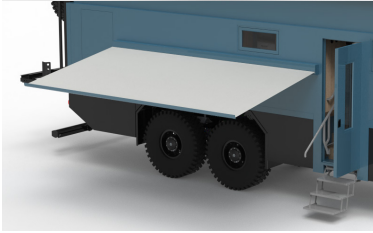
Hydraulic foldable exterior
terrace integrated into the side
wall, electric locking, extendable
to 2.4m x 2.1m, painted

SA31000
Exterior terrace in
the side wall



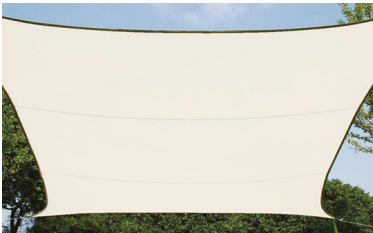
Electric awning mounted on the side wall of the compartment

SA32100
Awning



On the sidewall of the living unit, in a keder rail

SA32200
Sunshade sail



On the sidewall of the living unit, in a keder rail

SA32300
windscreen



Storage compartments inside with LED lighting, separately switchable

SA35000
Storage compartment lighting



Electric locking of the storage compartments, entry door, and storage space

SA36000
Central locking



Second 24V 150Ah alternator

SA37000
Second alternator



2 x additional lithium batteries
Total 24V, 400Ah, 12000Wh
1 x additional inverter
3.5 kW, 24V / 230V voltage

SA38000
400Ah energy package



1.2kW PV system including inverter on roof rack

SA39100
1.2kW PV package



2,2kW PV system including inverter on roof rack

SA39200
2.2kW PV package



2,8kW PV system including inverter on roof rack

SA39300
2.8kW PV package



Charging converter 110-230V for shore connection in America

SA42000
charging converter



Charge controller for the chassis starter batteries
So that the vehicle is always ready to start

SA42100
Starter battery charge controller



4kW split air conditioning system controllable via control panel, indoor unit with 3 air outlets. Compressor located under the body to reduce noise.

SA44000
4kW air conditioning system in the body



WhisperPower Piccolo5, 3.5 kW Indispensable if the air conditioning system is being used continuously. Electrical redundancy

SA50000
Diesel vehicle generator small



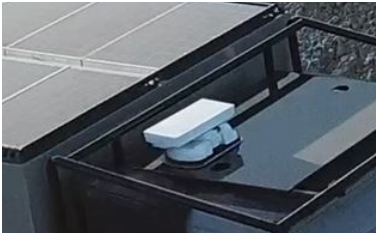
Installation of the automatic mobile Starlink antenna and Wi-Fi router Worldwide internet, streaming, and phone service

SA45100
Starlink antenna installation



For the treatment of surface water into drinking water (well, river, or inland lake water) 3-stage cascade filtration, 1x activated carbon filter 2 x UV disinfection unit, additional filter in front of the fittings Automatic disinfection pump for biofilm removal & system disinfection Pump, in a case, with suction hose for floating removal and 15 m roll hose

SA51000
Water treatment plant



Automatic satellite TV antenna and receiver including installation

SA45200
Satellite television antenna



For desalination of seawater into drinking water quality

SA52000
Saltwater desalination system



360° birdview camera with 10" monitor and panic lighting all around Optimum maneuvering thanks to all-round visibility on the vehicle

SA47000
Camerasystem



For Arocs cab with Hella LED Slim Lightbar 50" Necessary as a carrier for antennas, painted

SA53000
Roof rack with branch deflector



iPad 10, tablet holder in the driver's cab, with mirroring of the CZone operation For operating and controlling the body while driving

SA47500
iPad 10 with mirroring of the controls



Tank panels with lift hinges in storage box design. Visible panel on the silencer, painted

SA54000
Side panel



Fischer-Panda 8000x PVMV-N 8 kW Indispensable if the air conditioning system is being used continuously. Electrical redundancy

SA49000
Diesel vehicle generator large



Partition panel between cab and compartment, painted

SA55000
Panel on the driver's cab



Front protection grille made of stainless steel with 2 additional LED headlights
Polished stainless steel or black coated

SA59000
Front protection bar



Instead of the standard underbody protection, a hydraulically retractable underbody protection will be installed, painted

SA60000
Hydraulic underbody protection



Galvanized carrier for the spare tire, mounted at the rear. Wheel can be lowered with a hand winch.

SA61000
Spare tire carrier at the rear



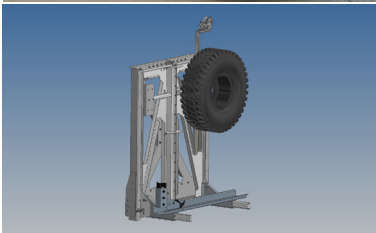
Hydraulic lift with app control. Lowerable to the ground. Platform foldable upward. For 1x quad, 2 x motorcycles, or small car. Spare tire mounted vertically or underneath the platform. Galvanized, maximum load capacity: 1100 kg.

SA62000
Large rear carrier



Wide flap on back door on the right side. Interior with airline rails, 230V socket and lighting
Top edge of box flush with the roof, ventilation grille in the flap
Painted in body color, box removable

SA63000
Aluminum storage box for large rear carrier



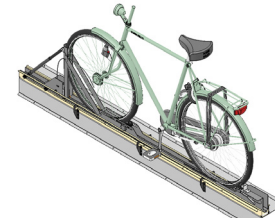
Hydraulic lift with app control Can be lowered to the ground Platform can be folded up For 1 x motorcycle 1 x vertical spare wheel Galvanized, maximum load: 450 kg

SA64000
small rear carrier



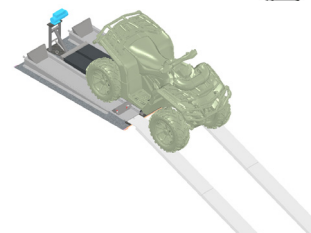
Wide flap on the back Door on the right side Interior with airline rails, 230V socket and lighting Top edge of the box flush with the roof, exhaust grille in the flap Painted in body color, box removable

SA65000
Aluminum storage box for rear carrier, small



Bicycle lift and rail system for 2 bicycles, 35 kg each, in the storage space

SA68000
Bicycle system in the rear garage



Holding system for a quad with ramps and winch in the storage space

SA69000
Quad carrier in the rear garage



Extendable and electrically lowerable shelving system for Euro storage boxes
Various adaptations possible

SA70000
Shelving system in the storage space



Hydraulic vehicle leveling system, controllable via app and touch panel. Vehicle can be leveled off-road

SA75000
Automatic vehicle leveling



Leather steering wheel, multimedia cockpit, leather climate control, driver and passenger suspension seats, automatic air conditioning, parking heater, Mercedes-Benz Mirror Cam

SA76000
Cab package



Black nappa leather with silver contrasting topstitching on the ceiling, walls and door panels

SA77000
Exclusive leather trim in the driver's cab



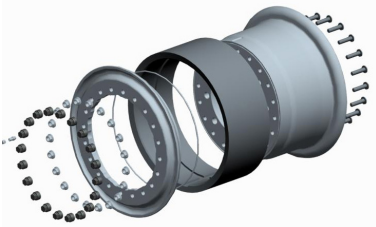
Black nappa leather with silver contrasting topstitching

SA78000
Exclusive leather cockpit



Driven and steered second rear axle to reduce the turning circle Up to 18° steering angle

SA79000
Rear axle steering for 6×6 and 8×8



20" Processed Hutchinson Beadlock Aluminium Rims

SA70000
Rims



STIS Preset 4/1 for Arocs 4×4

SA81100
Tire pressure control system 4×4



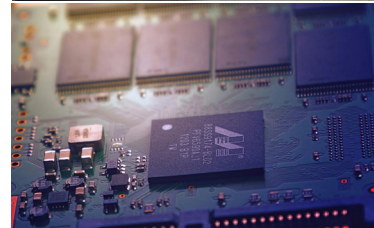
STIS Preset 4/1 for Arocs 6×6

SA81200
Tire pressure control system 6×6



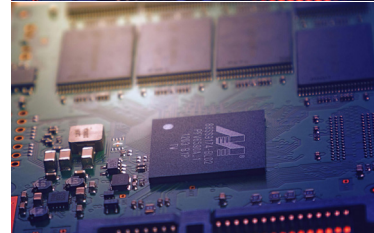
STIS Preset 4/1 for Arocs 8×8

SA81300
Tire pressure control system 8×8



Conversion to Euro 3 emissions standard
Programming the AdBlue system and removing the particle filter. A refit to Euro 6 is possible.
Only permitted in third countries!

SA84000
Euro 3 emissions standard



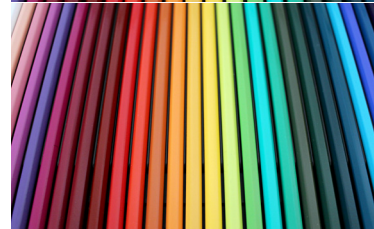
Increase in engine power from 60 – 150 HP
Only permitted in third countries!

SA85000
Power increase



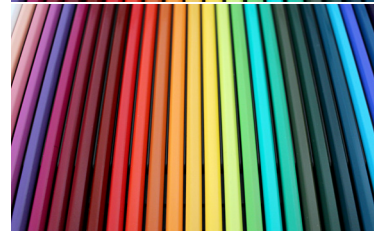
Desired colors for the driver's cab, living area and add-on parts

SA86100
Special painting



desired color for the Rims

SA86200
Painted Rims



Rear carrier intermediate frame and standard underrun protection painted

SA86300
Painted rear carrier, intermediate frame and underrun protection



Instead of the Arocs 4x4, an Arocs 6x6 is delivered.
Wheelbase changes to: 5000mm + 1450mm
The cab equipment remains the same
The extra axle eliminates some storage boxes

SA89000
Vehicle version in 6x6

All information has been provided to the best of our knowledge and belief.

The mention of brand names and protected trademarks is purely descriptive.



depending on agreement

SA89200
Vehicle version in 8x8

All mentioned brand names and protected trademarks are the property of their respective owners.

They are used for descriptive purposes and for identifying product and quality, and are not intended to infringe upon any rights.



Hydraulic winch mounted on the vehicle frame

SA90000
Winch on the front of the vehicle

The brand names used for description as well as the trademark (trademark, image trademarks) are used for identification purposes only and remain the property of the owner.

All images shown are example images and may contain optional equipment available at an additional cost.



Special requests are possible by arrangement

special wishes